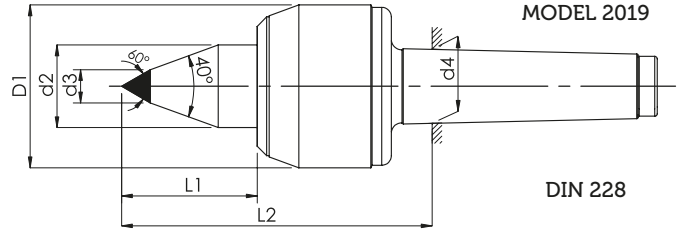


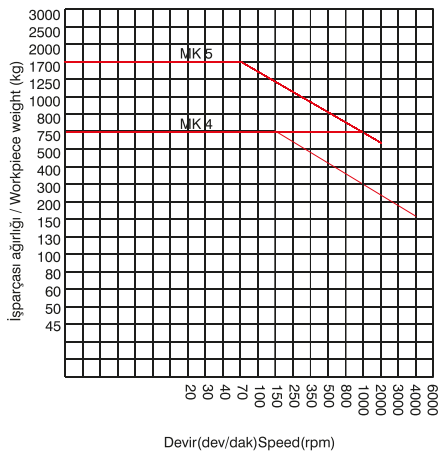
# Hassas Sert Metal Uçlu CNC Döner Punta

## Precision Carbide Type CNC Live Center

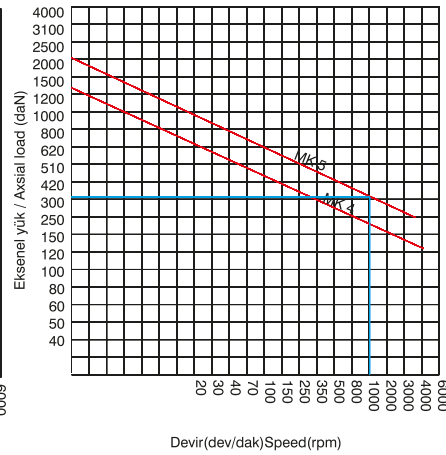


MODEL		2019	2019
Mors Koniği / Morse conic	MK	4	5
Ölçüler mm Dimensions mm	D1	68	78
	d2	3,450	44
	d3	14	14
	L1	25	57
	L2	123	148
	d4	31,267	44,399
Uç Salgısı / Center Runout	Max	0.005	0.005
Ağırlık / Weight	kg.	2,5	4,5
Sipariş Kodu / Order Code		CE40	CE50

### MODEL 2019



Örnek: 1000 Dev/Dak. ile dönen MK5 puntanın taşıya bileceği yük değeri  
Radyal yük: 750 kg  
Eksenel yük: 320 daN



Example: load value that rotary MK5 center cold carry with 1000 revolution /min  
Radial load: 750 Kg  
Axial load: 320 daN